

Welcome to Year 10 Mathematics Information Evening



Learn – Achieve – Enjoy - Succeed



Glyn Technology School Modular GCSE Mathematics

Course started September 2007 for current Year 10

Current Edexcel for year 11 (non-acc) and year 10 top sets



Two-tier GCSE mathematics:

Linear (2540)

10a1 (Mr Chiremba) and 10b1 (Mrs Jones)

Modular (2544)

11a2 (Mr Kirby) 11a3 (Miss Andrews) 11a4 (Mr Chiremba)

11b2 (Mrs Jones) 11b2a (Miss Andrews) 11b3 (Miss Guinan)

11b4 (Mr Barrett)

(both with coursework - introduced September 2006)

Changes from September 2007

The content remains the same except that there is not a coursework module.



Changes from September 2007

Classes

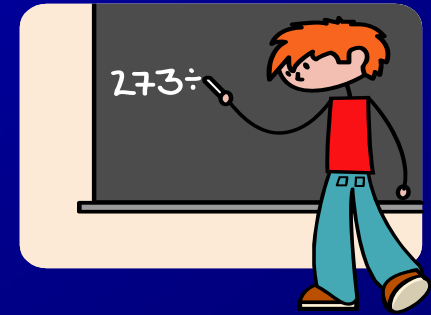
Two-tier GCSE mathematics: Modular (2381)

10a2 (Mr Welford) 10a3 (Mr Barrett)

10a4 (Mrs Allen) 10a5 (Miss Lloyd)

10b2 (Mr Barrett) 10b3 (Miss Lloyd)

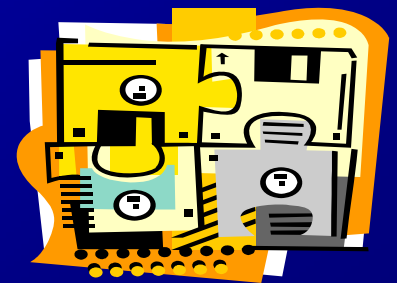
10b4 (Mr Kirby) 10b5 (Miss Guinan)



Edexcel modular structure

GCSE modular (2381) will have 3 units:

- Unit 1: data handling
 - Unit 2: split into 2 stages
 - Unit 3: terminal examination
- Units 2 and 3 cover number,
algebra, shape and space
- All discrete units



Edexcel modular structure

Unit 1 A04 (Handling data) 20% of total GCSE

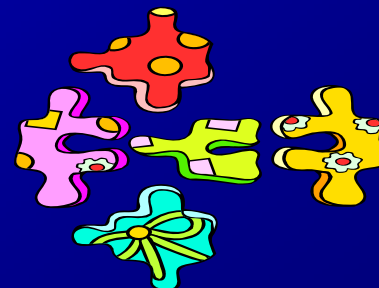
Examination in March 2008 (03/03/08)

Consists of 1 paper 40 minutes long:

Section A Calculator

Section B Non-Calculator

Each section 20 minutes long



Edexcel modular structure

Unit 2 AO2/3

(Number & algebra/Shape, space & measures)

30% of total GCSE

Examination in November 2008

Unit 2, split into 2 Stages:

- Stage 1: multiple choice, available as paper based or on-screen ~ Non-calculator
- Stage 2: written paper ~ calculator

Both stages are 30 minutes long



Edexcel modular structure

Unit 3 A02/3

(Number & algebra/Shape, space & measures)

50% of the total GCSE

Examination June 2009

Unit 3: Two papers Calculator and non-calculator

Foundation: both papers 1 hour each

Higher: both papers 1 hour 10 minutes each



Edexcel modular structure

GCSE Overall

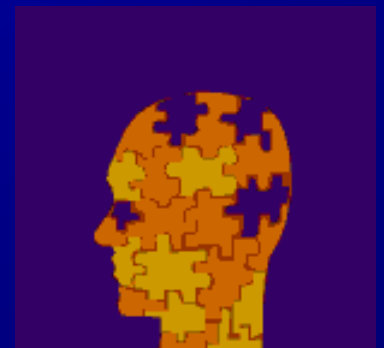
Unit 1: A04 (Handling data) - 20%

Unit 2: A02/3 (Number & algebra/Shape, space & measures) - 30%

Unit 3: A02/3 (Number & algebra/Shape, space & measures) - 50%

20% marks will be for assessment of A01

Using & Applying



New assessment objective weightings

Assessment Objective

- A01: Using and Applying Maths
- A02: Number and algebra
- A03: Shape, space and measures
- A04: Handling data

Weighting

20%

50 - 55%

25 - 30%

18 - 22%



Edexcel modular structure

Two tiers

Foundation:

Grades from G to C

Higher:

Grades from D to A* (with E allowed)



Edexcel modular structure

- November, March and June examination sessions
- One resit at each tier allowed



Impact on the GCSE

The content remains the same

The assessment covers the same objectives, but the weightings are changed

There is not any coursework



Question papers assessment structure

- ❑ 50% on lowest two grades
- ❑ 25 - 30% on highest two grades

As a result of the changes of emphasis on question paper structure, Edexcel expect the grade boundaries to be higher across the board than they have been for the three-tier GCSE Mathematics in recent years.



Resources

Edexcel GCSE Mathematics (Modular)
Interactive version supplied on a disc



mymaths.co.uk website

All students have a personal log-in



Virtual Learning Platform

